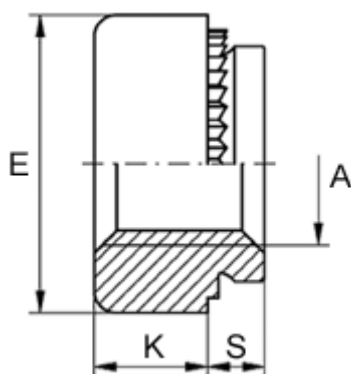


Article number: 12500000050100
Description: KLEE-coil 500 000 050.100
M5 Hardened, zinc-pl./chr. yellow

Measures



Female thread A	= M5
Height K	= 2.0
Max recess height	= 1.0
Min distance to edge	= 4.0
Outer diameter E	= 9.0
Plate thickness	= 0.8 to 1.0
Recommended bore diameter +0.05	= 6.00